

Winter EXPRESS™

Winter Express is a multi-functional diesel fuel additive designed to improve cold-weather performance.

EXCEPTIONAL WINTER PERFORMANCE

APPLICATION

Winter Express is safe to use in all heavy-duty, diesel-powered equipment for on-road, off-road, and marine use. Designed for exceptional performance in #2 ULSD and biodiesel blends. Winter express is a proprietary cold flow improver blend containing wax modifiers, deicer, and wax anti-settling agents.



KEY PERFORMANCE BENEFITS

- Alters the size of wax crystals to inhibit their growth and improve flow through filters.
- Lowers the freeze point of entrained or free water from 32°F to -20°F.
- Reduced risk of fuel line freeze up.
- Improves filterability by lowering the Cold Filter Plugging Point (CFPP) of the fuel by over 20°F on average.
- Designed to reduce and/or replace blending with #1 fuel oil. A good rule of thumb is that fuel treated with Winter Express has a lower CFPP than fuel diluted with 20-30% #1 ULSD.
- Suspends wax into solution to guard against and slow the process of heavy wax migrating to the bottom of the tank.

RECOMMENDED TREAT RATE

- 1:1500 of #2 ULSD or biodiesel blend.
- 1:750 of #2 ULSD or biodiesel blend for extreme cold weather.

STORAGE & HANDLING

Store above -30°F.

For best results, add to fuel when the fuel temperature is 15°F above the cloud point.

Do not pour into an empty or cold tank. Premix the additive with an equal part of fuel or add to tank after some of the fuel has been added. Winter express will then be mixed while the remainder of the tank is filled.

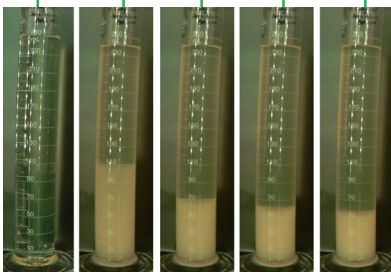
Shelf Life: 24 months @ ambient temperature.

WINTER EXPRESS TYPICAL PROPERTIES

Physical State	Liquid
Color	Clear to hazy; Light straw; Amber
Density, lbs/gal	7.39
Flash Point	Closed cup: 30°C (86°F)

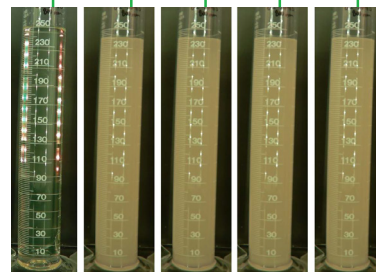
PROTECTION AGAINST WAX SETTling

0HR 12HR 24HR 36HR 48HR



Wax crystals settling in standard cold flow improvers after 48 hours.

0HR 12HR 24HR 36HR 48HR



Winter Express offers days of protection from wax settling.